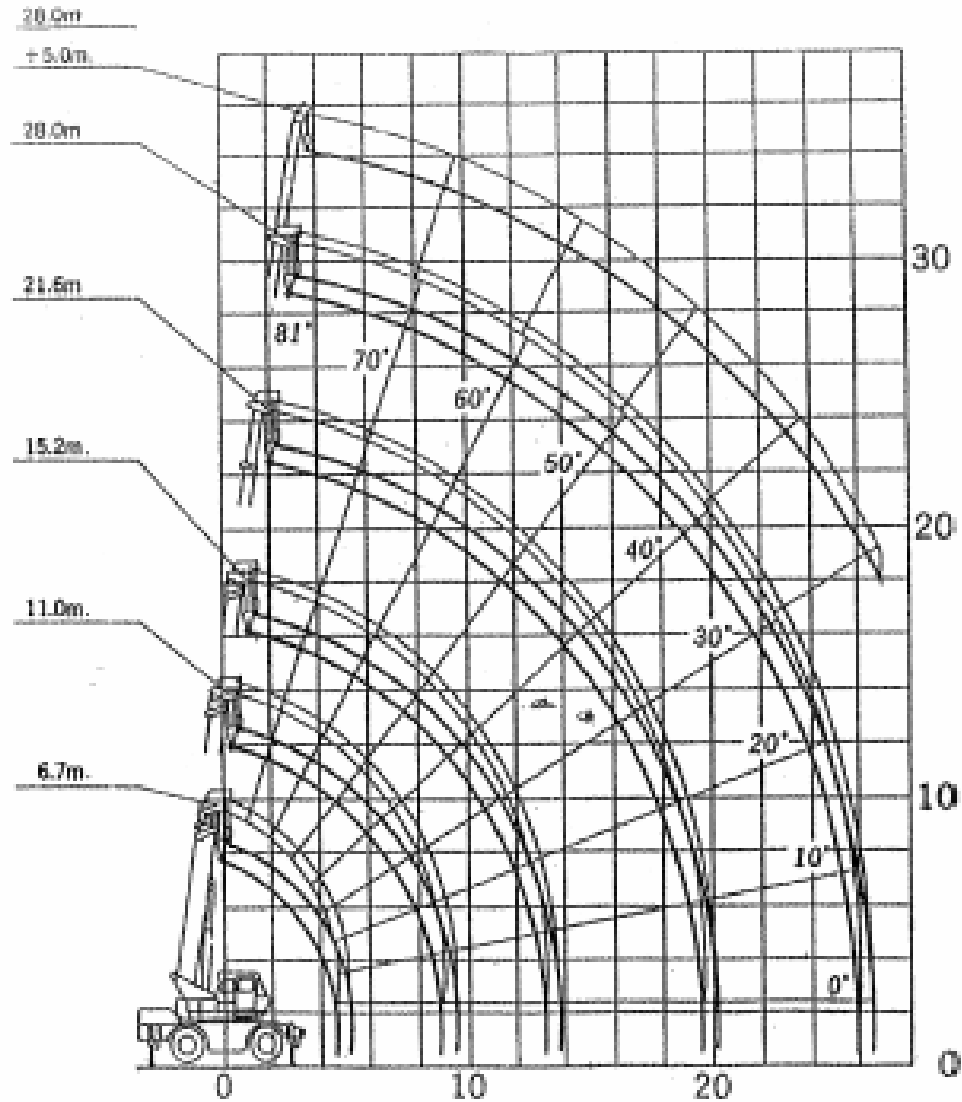


(m)	Outriggers set to - (5.8m)					Outriggers set to - (4.6m)					Outriggers set to - (3.4m)					Outriggers set to - (2.04m)					(m)
	6.7m	11.0m	15.2m	21.6m	28.0m	6.7m	11.0m	15.2m	21.6m	28.0m	6.7m	11.0m	15.2m	21.6m	28.0m	6.7m	11.0m	15.2m	21.6m	28.0m	
3.0	22.00	12.00	12.00	8.00		22.00	12.00	12.00	8.00		22.00	12.00	12.00	8.00		7.80	7.50	7.00	7.00		3.0
3.5	20.00	12.00	12.00	8.00		20.00	12.00	12.00	8.00		15.20	12.00	12.00	8.00		6.10	5.80	5.40	5.60		3.5
4.0	17.00	12.00	12.00	8.00	6.00	17.00	12.00	12.00	8.00	6.00	11.40	11.00	11.00	8.00	6.00	4.80	4.50	4.30	4.55	3.80	4.0
4.5	15.00	12.00	12.00	8.00	6.00	15.00	12.00	12.00	8.00	6.00	8.95	8.60	8.40	8.00	6.00	3.80	3.50	3.40	3.80	3.80	4.5
5.0		12.00	12.00	8.00	6.00		12.00	12.00	8.00	6.00		6.95	6.85	7.00	6.00		2.80	2.70	3.20	3.25	5.0
5.5		12.00	12.00	8.00	6.00		10.00	10.00	8.00	6.00		5.75	5.65	6.20	6.00		2.20	2.10	2.65	2.75	5.5
6.0		12.00	11.50	8.00	6.00		8.50	8.40	8.00	6.00		4.80	4.70	5.40	5.30		1.70	1.60	2.25	2.35	6.0
6.5		11.30	10.60	8.00	6.00		7.20	7.10	7.90	6.00		4.05	3.95	4.65	4.70		1.30	1.20	1.85	2.00	6.5
7.0		9.70	9.40	7.85	6.00		6.20	6.10	6.85	6.00		3.45	3.35	4.00	4.15		0.90	0.80	1.55	1.70	7.0
8.0		7.35	7.20	7.10	5.90		4.65	4.55	5.30	5.65		2.50	2.40	3.05	3.30				1.00	1.20	8.0
9.0		5.70	5.60	6.35	5.35		3.60	3.50	4.20	4.50		1.80	1.70	2.35	2.65						9.0
10.0			4.50	5.25	4.80			2.70	3.40	3.70			1.10	1.85	2.10						10.0
11.0			3.60	4.35	4.30			2.05	2.75	3.05			0.60	1.40	1.65						11.0
12.0			2.90	3.65	3.85			1.50	2.25	2.55				1.00	1.30						12.0
13.0			2.30	3.05	3.40			1.05	1.85	2.10				0.65	0.95						13.0
14.0				2.60	2.90				1.45	4.75				0.50	0.70						14.0
15.0				2.20	2.50				1.10	1.45											15.0
16.0				1.80	2.10				0.85	1.15											16.0
17.0				1.50	1.80				0.65	0.90											17.0
18.0				1.20	1.55				0.40	0.70											18.0
19.0				1.00	1.30					0.50											19.0
20.0				0.85	1.10					0.35											20.0
21.0					0.95																21.0
22.0					0.80																22.0
23.0					0.65																23.0
24.0					0.50																24.0
25.0					0.35																25.0
Falls			4	3	2	7	4	4	3	2	7	4	4	3	2	7	4	4	3	2	Falls

Main HOOK WEIGHT 160 KG
 CAPACITY BASED ON 75% DIN 15019.2

KATO KR22H



BOOM LENGTH

RADIUS

HEIGHT FROM GROUND

KATO KR22H

(A) STATIONARY ON TYRES

(B) CREEP SPEED ON TYRES (2Km/h)

RADIUS METERS	6.7 M BOOM		11 M BOOM		15.2 M BOOM		6.7 M BOOM		11 M BOOM		15.2 M BOOM		RADIUS METERS
	A	B	A	B	A	B	A	B	A	B	A	B	
3		6		5.5		5.2		4.8		4.4		4	3
3.5	8.5	4.5	8.5	4.1	8	3.8	6.8	3.6	6.4	3.3	5.9	3	3.5
4	8.5	3.3	8.5	3.2	8	3	6.8	2.65	6.4	2.55	5.9	2.4	4
4.5	7.5	2.55	7.2	2.55	6.5	2.4	6	2.05	5.5	2.05	5	1.9	4.5
5			6.1	2	5.4	1.9			4.75	1.5	4.3	1.4	5
5.5			5.1	1.55	4.55	1.5			4.1	1.05	3.65	1	5.5
6			4.25	1.2	3.85	1.15			3.4	0.65	3.1	0.6	6
6.5			3.55	0.9	3.3	0.85			2.85		2.65		6.5
7			3	0.65	2.8				2.4		2.25		7
8			2.15		2.05				1.65		1.6		8
9			1.55		1.5				1		1		9
10					1						0.5		10
11					0.6								11
MINIMUM ANGLE				30 DEG	30 DEG	36 DEG					42 DEG	35 DEG	60 DEG
HOOK WEIGHT	160 KG	160 KG	160 KG	160 KG	160 KG	160 KG	160 KG	160 KG	160 KG	160 KG	160 KG	160 KG	160 KG
PARTS OF LINE	7	7	4	4	4	4	7	7	4	4	4	4	

PICK AND CARRY SHOULD ONLY BE USED FOR FIRM LEVEL GROUND AND ALL SUDDEN MOVEMENTS SHOULD BE AVOIDED AS THIS MAY CAUSE DAMAGE TO THE CRANE AND THE OPERATOR

MAXIMUM CAPACITY SINGLE LINE PULL IS 3,300 KG THIS IS FOR MAIN AND AUXILIARY WINCHES

KATO KR220H

28 METER BOOM - 5 METER JIB - 3.4 TON MAX ON AUXILIARY LINE - WEIGHT OF AUXILIARY HOOK (60 Kg)

OUTRIGGERS SET TO 3.8M SETTING

OUTRIGGERS SET TO 4.4M SETTING

OUTRIGGERS SET TO 3.4M SETTING

DEGREES	METERS	TONS	DEGREES	METERS	TONS	DEG	METERS	TONS
81	4	3.1	81	4	3.1	81	4	3.1
73	8.5	3.1	73	8.5	3.1	73	8.5	3.1
68.8	11	3.1	68.8	11	3.1	68.8	10.8	1.9
65	13	2.65	65	13	2.3	65	12.7	1.25
60	15.5	2.2	60	15.4	1.55	60	15	0.65
57	17	2	57	16.8	1.2	57	16.5	0.35
56	17.4	1.85	56	17.2	1.1	56	16.9	0.3
50	20.1	1.25	50	19.9	0.6	MINIMUM	OPERATING	ANGLE 54 DEG
45	22.1	0.9	45	22	0.3			
40	23.9	0.65	MINIMUM	OPERATING	ANGLE 42 DEG			
35	25.6	0.45						
30	27.1	0.3						
MINIMUM	OPERATING	ANGLE 25 DEG						

KR-22H WIRE ROPE

ROPE DIAMETER	: 16mm
MAIN LENGHT	: 100m
AUX LENGHT	: 75m
MINIMUM BREAKING POINT	: 18.5 ton
ROPE CONSTRUCTION MAIN	: SES (48) - 6 X Ws(31)
SERIAL No. : 3310059	AUX IWRC 6 X Fi (29)