

MAEDA
MINI-CRAWLER CRANE
MC-355HC



NEWLY DEVELOPED

HIGH POWER 3.0^t CAPACITY

Top Priority on Safety and Performance!
Advanced Pentagonal Boom

Used For The Following

- CIVIL WORKS
- AGRICULTURE AND FORESTRY WORK
- BUILDING WORK
- FRAMEWORK
- PLANT ERECTION
- MACHINE INSTALLATION
- LANDSCAPING



WORKING RANGE DIAGRAM and TOTAL RATED LOAD TABLE

• WORKING RANGE DIAGRAM indicates unloaded condition, so does not include boom deflection.

MC-355HC

For Boom ①, Booms ① + ②

To be used in the standard stroke extension of outriggers.

| Working radius (m) | 2.0 or less | 2.25 | 2.5 | 2.7 | 3.0 | 3.5 | 4.0 | 4.5 | 5.0 | 5.63 |
|--------------------------------|-------------|------|------|------|------|------|------|------|------|------|
| Rated load for crane main body | 2900 | 2900 | 2900 | 2600 | 2300 | 1950 | 1650 | 1450 | 1250 | 1150 |
| Rated load (kg) | 2900 | 2900 | 2900 | 2600 | 2300 | 1950 | 1650 | 1370 | 1080 | 900 |

When extending boom ③, operate according to the performance for booms ① + ② + ③

For Booms ① + ② + ③

To be used in the standard stroke extension of outriggers.

| Working radius (m) | 2.0 or less | 2.7 | 3.0 | 3.5 | 4.0 | 4.5 | 5.0 | 5.5 | 6.0 | 7.0 | 7.73 |
|--------------------------------|-------------|------|------|------|------|------|------|-----|-----|-----|------|
| Rated load for crane main body | 2300 | 2300 | 2100 | 1700 | 1400 | 1200 | 1050 | 950 | 850 | 700 | 650 |
| Rated load (kg) | 2300 | 2300 | 2100 | 1700 | 1400 | 1200 | 1050 | 920 | 780 | 590 | 490 |

When extending boom ④, from boom ③ more than half the length of the mark ④, operate according to the performance for booms ① + ② + ③ + ④

For Booms ① + ② - ③ + ④

To be used in the standard stroke extension of outriggers.

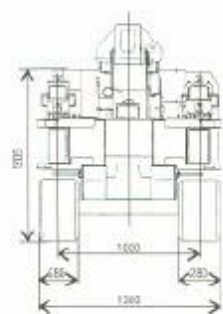
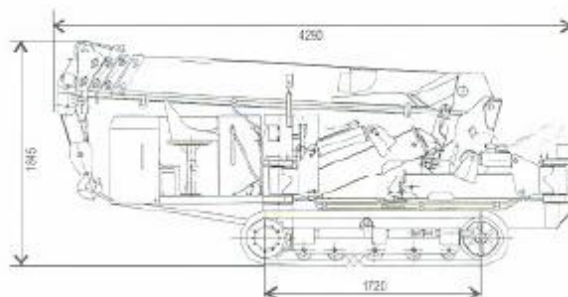
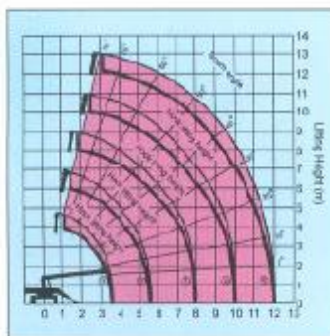
| Working radius (m) | 4.0 or less | 4.5 | 5.0 | 5.5 | 6.0 | 7.0 | 8.0 | 9.0 | 9.93 |
|--------------------------------|-------------|-----|-----|-----|-----|-----|-----|-----|------|
| Rated load for crane main body | 1000 | 900 | 800 | 750 | 700 | 600 | 530 | 470 | 450 |
| Rated load (kg) | 1000 | 900 | 800 | 750 | 700 | 590 | 480 | 390 | 290 |

When extending boom ⑤, operate according to the performance for boom ⑤ shown in the next table

For Boom ⑤ extension

To be used in the standard stroke extension of outriggers.

| Boom angle (°) | 70 or more | 65 | 60 | 50 | 40 | 30 | 20 | 10 | 3 |
|--------------------------------|------------|-----|-----|-----|-----|-----|-----|-----|-----|
| Rated load for crane main body | 600 | 500 | 400 | 300 | 250 | 220 | 200 | 200 | 200 |
| Rated load (kg) | 600 | 500 | 400 | 300 | 250 | 220 | 200 | 200 | 200 |



SPECIFICATIONS

| CRANE MODEL | | MC-355HC |
|-------------------------|---|--|
| GENERAL | CRANE CAPACITY | 3.0 x 2.4m |
| | MAX. WORKING RADIUS | 12.135m |
| | MAX. LIFTING HEIGHT | Aprox. 11.8m |
| WINCH SYSTEM | TYPE | 1 x WMS (76) |
| | WIPE ROPE | φ8 x 13m |
| | NO. OF TURNS OF ROPE | 4 turns |
| | HOOK SPEED | 11.3m / min |
| | BOOM LENGTH | 12.335m |
| BOOM TELESCOPING SYSTEM | BOOM STAGES | 4 booms: Pentagon-type + 1 boom: Hexagon-type |
| | TELESCOPING TYPE | Sequentially operating two cylinders + simultaneous winch rope operating + CMS type hydraulic extensions |
| | HYDRAULIC TELESCOPING STROKE | 6.61m |
| | TIME FOR EXTENSION | 28sec |
| BOOM ELEVATING SYSTEM | BOOM ELEVATING METHOD | Direct push type two double-acting cylinders |
| | BOOM ELEVATING ANGLE | 3° - 76° |
| | TIME FOR BOOM ELEVATING | 13 sec |
| SLEWING SYSTEM | SLEWING METHOD | Hydraulic rotor |
| | SLEWING ANGLE | 360° continuous |
| | SLEWING SPEED | 2.8rpm |
| OUTRIGGERS | Two step extension hydraulic cylinder push type | |

| SAFETY DEVICES | | Load limiter, angle rotor, automatic hydraulic lock (pilot check), overwinding alarm (by battery type mounted on boom tail), hydraulic safety valve |
|------------------------------|---------------------|---|
| ENGINE / CRAWLER PERFORMANCE | TYPE | Water-cooled diesel (TNM 73L-UMS (YANMAR)) |
| | OUTPUT | 19ps/3000rpm |
| | GRATABILITY | 30° |
| | SPEED | Forward 1.28km/h Reverse 1.28km/h |
| | DRIVING DEVICE | Hydraulic Motor |
| | BRAKE ANGLE | 22° |
| | SLEWING SYSTEM | RIGHT & LEFT INDEPENDENT CONTROL |
| | SIDE TURN STABILITY | 3G |
| CRAWLING PRESSURE | CRAWLER | RUBBER CRAWLER |
| | CRAWLER WIDTH | 260mm |
| | CRAWLER LENGTH | 1720mm |
| | GROUND PRESSURE | 31.4kPa (0.32kg/cm ²) |
| HYDRAULIC PUMP | HYDRAULIC PUMP | Dual tandem gear pump |
| | RELIEF SET PRESSURE | 20.6MPa (210kg/cm ²) (for crawling), 19.1MPa (195kg/cm ²) (for crane) |
| HYDRAULIC OIL TANK | 76L | |
| GROSS WEIGHT | 2120kg | |
| TOTAL LENGTH | 4290mm | |
| TOTAL WIDTH | 1300mm | |
| TOTAL HEIGHT | 1445mm | |
| HYDRAULIC OIL TANK | 36L | |